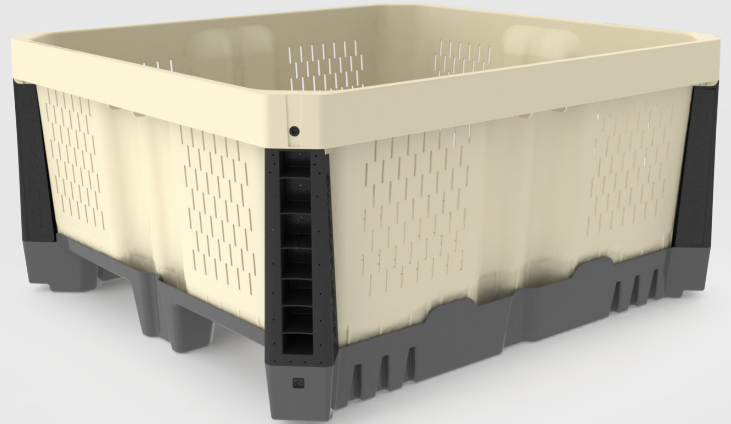


# Hybrid 44C-FV

## HYBRID FAMILY

The ultra-light, yet strong, Hybrid 44C-FV, is the compact version of the taller Hybrid 44P-FV a.k.a "Shipper Bin". We call this compact version the "Short Shipper".



### Features

---

Disassembles for efficient shipping

---

Easy and quick snap off frame

---

Easy to repair

---

Interlocking when stacked for safety

---

Smooth soft surfaces to protect fruit

---

Shape offers a bruise buffer zone on outside of walls to protect fruit from adjacent stacks

---

Durable FDA-approved plastic

---

# Hybrid 44C-FV

800-845-6555  
www.iplglobal.com

Using the Hybrid  
44C-FV



## Hybrid 44C FV Specification



Load Capacity	882lbs (400 kg)
Volume Capacity	27,700 cu. in. (454 liters)
Tare Weight	54 lbs (24.5 kg)
Maximum Stack Weight <sup>1</sup>	8,500 lbs (3,856 kg) long term, ambient temp.
Molding Process	Injection molding
Material	Virgin polypropylene resin
Approval	FDA-regulated material
Ventilation Slots	Configurable, vented or solid
Fork Lift Entry	2 Way
External Dimensions	48" (L) x 44" (W) x 23. 3/16" (H) 1,219 mm (L) x 1,118 mm (W) x 589mm (H)
Internal Dimensions	Length: 46 5/8" / 1,184.28 mm Width: 42 1/8" / 1,070 mm Minimal Clearance: 33 11/100" / 841 mm



### Notes

Dimensions assume tolerance of 1/4". Volume capacities assume tolerance of 5% and tare weights assume a tolerance of 4% unless noted otherwise. Ambient temperature approximately equal to 75° F.

Data is subject to change.

1 Stack Weight = (weight of bin contents + tare weight of bin) X number of bins in stack

Please refer to the appropriate User Guide for information on the safe transportation, stacking and handling of Macro products. The User Guides in PDF format, call us at 800.845.6555.