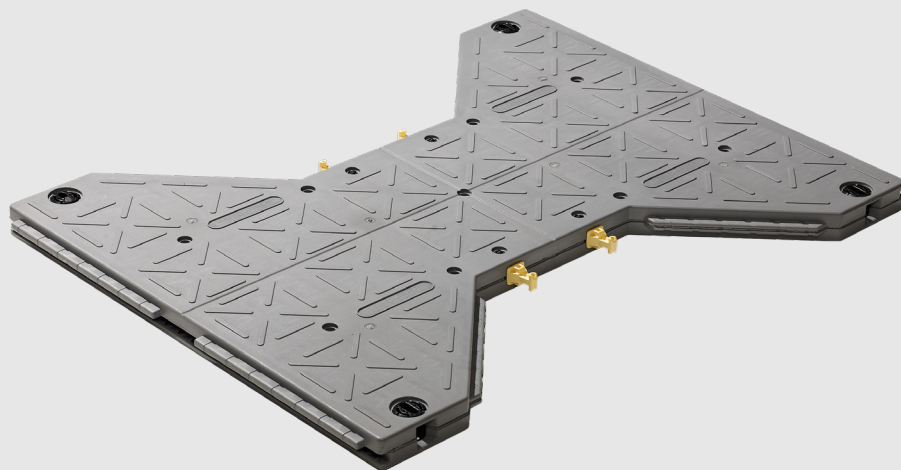


# I-Trac™

## MACROTRAC FAMILY



### Professional Grade temporary Roadway and Military Deployment System

Part of the IPL MacroTrac family of portable flooring and roadway products in North America, I-Trac is a state-of-the-art modular infrastructure system that enables vehicular traffic over inhospitable or unsafe ground. I-Trac features a patented interlocking design that creates a contiguous surface capable of carrying extreme loads over virtually all ground conditions.

I-Trac can be deployed as temporary roadway, helipad, or tarmac. The advantage that I-Trac offers in comparison to alternative products is its extreme strength to weight ratio. Each panel weighs only 38 pounds and is manually deployable. Installation is quick and easy, requiring no special skills or equipment.

#### Features

**Most flexible** and highly capable roadway systems available on the market

**Extreme strength** to weight ratio. Has a load capacity of 86,400 lbs per sq ft.\*

**Light weight construction** has each panel weighing only 38 pounds

**Quick and easy** to install and extract from a jobsite.

**Easy to use** at any jobsite, no equipment is required for installation

**Innovative and Flexible** design allows for manual deployment or mechanical deployment in pre-assembled sections

**Heavy duty** access matting can be deployed on some of the most hostile terrain

Benefits of Using I-Trac™



**Aviation**  
I-Trac provides a safe and secure surface for aircraft, which, with its light weight, is even “air portable.” For military or relief organizations, I-Trac can quickly be deployed as an airfield for tactical or resupply purposes.



**Events**  
I-Trac is the ideal base to build temporary staging and creates a strong rigid surface to deliver vehicles, heavy equipment, or pedestrian traffic over sensitive surfaces, indoors or out.



**Remote Site Access**  
I-Trac is inert to most chemicals and offers a good level of electrical insulation. It offers excellent turf protection and safe vehicle and equipment access, even on soft ground.



**Construction**  
I-Trac creates a contiguous surface with an extreme strength to weight ratio. Secured by an inbuilt connection device, I-Trac is completely man-handable and does not require any special tools for installation.



I-Trac™  
Specifications

Panel Size	46.5" x 36.3" x 2.1" (L x W x H - bowtie shaped)
Panel Area	8.47 Sq Ft
Panel Weight	38 lbs
Load Capacity	86,400 lbs/Sq Ft (600 psi)*
Fire Ratings	UL94HB, ASTM 2859
Material	High-impact polypropylene with UV inhibitors

\*Static load, solid sub-surface. Varies depending on sub-surface

